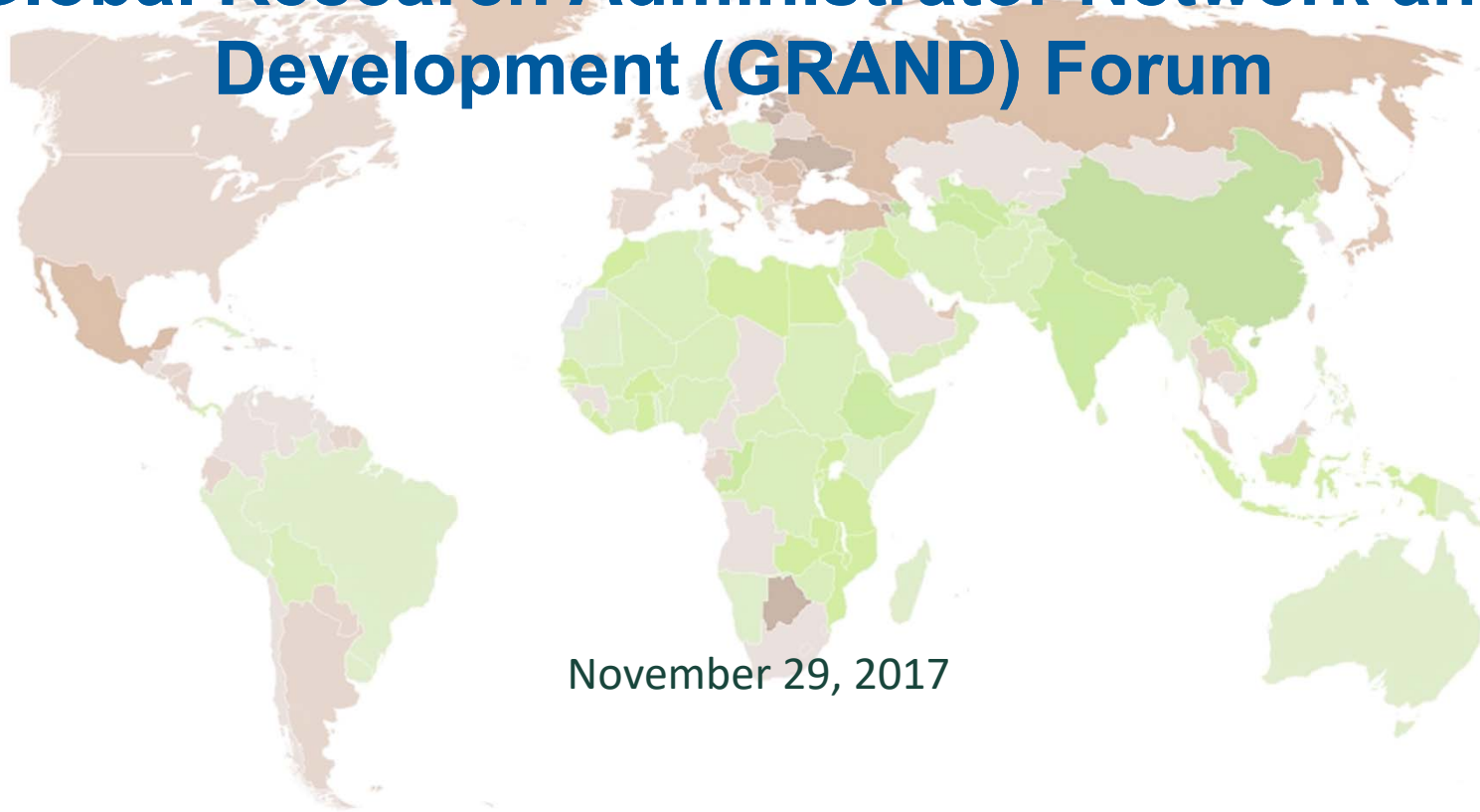


# GRAND

## Global Research Administrator Network and Development (GRAND) Forum



November 29, 2017

# GRAND Forum Agenda

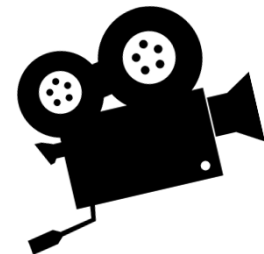
- Overview - Twila Fisher Reighley, AVP for Research, Sponsored Programs Administration
- Premier of *Making it Real, Part I*
- Lessons Learned - Jen Riebow, Research Administrator, Department of Entomology, CANR
- Travel Clinic, Bonnie Seaks, Physicians Assistant, Office of the University Physician
- Questions & Answers (panel)
- Networking (*and light refreshments*)



## *Making it Real*

- Goals:
  - Learn about MSU's impact on the world through a variety of projects
  - Gain perspective on how we can help
- Katie Winkler volunteered to work with team to interview seven faculty:
  - What is the focus?
  - What are the impacts?
  - What are the challenges?
  - Why is project/administrative support important?
- Insightful responses; consolidated in two parts

- *Making it Real, Part I*
  - Dr. Eric Crawford; Professor and Co-Director of Food Security Group, Department of Agricultural, Food, and Resource Economics, CANR
  - Anne Schneller; Co-Director, BHEARD and GRAIN Afghanistan Projects, Department of Agricultural, Food, and Resource Economics, CANR
  - Dr. Terrie Taylor; University Distinguished Professor, Tropical Medicine, Department of Osteopathic Medical Specialties, COM



- *Making it Real, Part I*
  - Heard related to leveraging faculty efforts:
    - Challenges are significant and impact timelines
    - The support we provide at MSU from departments, colleges, and central administration makes a difference
    - Collaborating with MSU units and partnering with subawardees makes a positive impact
  - Thanks to the faculty that shared their responses and the Sponsored Programs Administration staff that filmed, edited and produced the video.



- *Making it Real, Part II* (GRAND Forum Spring 2018)
  - Dr. Bobby Bringi; Research Professor, Chemical Engineering and Materials Science, CoE
  - Dr. Dan Clay; Professor, Department of Community Sustainability, CANR
  - Dr. Cristian Meghea; Assistant Professor, Obstetrics Gynecology & Reproductive Biology, CHM
  - Dr. Irvin Widders; Professor and Director of Feed the Future Legume Innovation Lab, Department of Horticulture, CANR

- Lessons Learned
  - Jen Riebow, Research Administrator, Department of Entomology, CANR
- Travel Clinic
  - Bonnie Seaks, Physicians Assistant, Office of the University Physician

- Q&A Panelists:
  - Julia Miskiewicz, Senior Agreement Administrator, Office of Sponsored Programs
  - Angelica Santos, Financial and Contractual Administrator, Center for Global Connections, CANR
  - Kristy Smith, Assistant Director, Contract and Grant Administration



Please complete the Qualtrics survey that will be sent via email tomorrow.



Thanks for participating in today's session, and we hope to see you at the GRAND Forum, Spring 2018!



Please join us for networking.

