

— OFFICE OF THE —
**UNIVERSITY
PHYSICIAN**





TRAVEL CLINIC

Our Mission



- To promote healthy and safe travel by providing medicines, preventive vaccines and health counseling to a diverse group of travelers



- The Travel Clinic utilizes national and international travel expertise to provide current travel information and recommendations
- We are a designated Yellow Fever vaccine site
- Our travel professionals are certified by the International Society of Travel Medicine (ISTM)



Location: First floor in the Olin
Memorial Health Center

Web: <http://travelclinic.msu.edu>

Phone: (517)353-3161

Services



- Consultation- information, risk assessment, and advice
- Routine and Travel Vaccines
- Medications for traveler's diarrhea, malaria prophylaxis, altitude sickness...

Appointments



- Appointments are required
- Appointments are available Monday-Friday year round. Call 517-353-3161 or email travelclinic@ht.msu.edu to make an appointment
- The [Travel Vaccine Planner](#) must be completed prior to the appointment or there will be an additional \$15 charge

Appointment Prep



- The exact itinerary
- The completed travel planner
- Immunization records
- List of current medications
- Allergies
- Department name and account number for billing

Flight plans

- Scheduled or unscheduled stops in certain countries can add additional vaccination requirements



TRAVEL
CLINIC

- If I am going to Africa, Asia or South America, how much ahead of time do I need an appointment?

**At least
TWO
months**



- What if I am going to Central America, Eastern Europe or Middle East?



TRAVEL
CLINIC

**At least
ONE
month**



- Travel to: UK, Australia, Western Europe, New Zealand, Japan?

- ▶ Make sure routine immunizations are up to date
- ▶ Visit the travel web site for topics of interest
- ▶ Travel appointment only if concerns or taking side trips to areas where there are additional health risks

MSU Travel



- Travel for University business is considered an occupational risk by MIOSHA
- The cost of medications and immunizations needed for safe travel must be paid for by MSU

Travel Clinic Charges TRAVEL CLINIC

- Consultation fee
- Vaccines
- Medications
- Personal protective measures
- No Travel Planner

Billing



- We will bill to department account
- Account number should be available at the consultation appointment
- We do NOT bill insurance

Consultation Fee



- Based on time spent
- **Initial** travel consultations average 45-60 minutes
- Ranges between \$75 and \$95
- Follow up visits for the same trip generally do not have consultation fee

Vaccines



- Range between \$30 and \$300 per DOSE
- Some vaccines are a series- may be two or three doses in the series

Travel Vaccines



Time needed before departure	
Hepatitis A	4 weeks
Influenza	2-4 weeks
Japanese Encephalitis	5-6 weeks
Meningitis	2-4 weeks
Polio	2-4 weeks
Rabies	4-5 weeks
Typhoid	2-4 weeks
Yellow Fever	2-4 weeks

Influenza



- Is a travel risk
 - Avian Flu
 - Swine Flu (H1N1)
 - Seasonal Flu
 - No Tamiflu

Routine immunizations



TRAVEL
CLINIC

- Routine immunizations are available at the travel clinic
- The cost of routine immunizations may or may not have to be covered by MSU

Travel Medications



- We will write prescriptions for recommended medications
- Rx's can be filled anywhere, however, pharmacies outside of MSU are not able to bill departments
- Prescriptions filled at Olin Health Center Pharmacy or Clinical Center Pharmacy may be billed to department accounts and can be delivered

Health Risk from Insects



TRAVEL
CLINIC

- Illnesses such as Malaria, Dengue fever, Chikungunya, Zika, and Japanese Encephalitis are carried by insects
- Insect repellent and permethrin are considered personal protective equipment
- This cost must be covered by MSU



Tuberculosis (TB) risk

- Pre and post TB testing may be recommended
- Mostly found in Africa, Asia, Eastern Europe, South America, Latin America
- MDR and XDR TB: 52% and 26% treatment success rates.(2013 data)

Risk Assessment



We advise about health risks and the likelihood of occurrence using information from Centers for Disease Control, World Health Organization and infectious disease specialists and evaluation of the traveler's medical history

The Traveler:



chooses how much risk they wish to assume based on current information

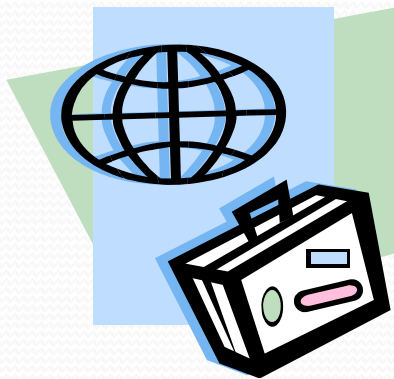
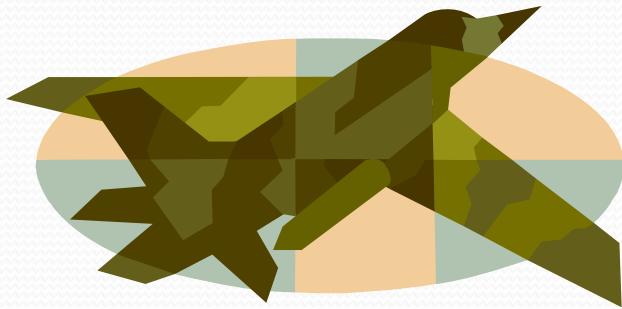
Frequent travelers



- Previous MSU Travel Clinic appointment in the past year
- Phone consultations available
- Scheduled day and time for phone consult
- \$35 billed to dept. account
- Travel Clinic may request the traveler to schedule an in office consultation if additional vaccines are required, new destination, or more than 1 year since last Travel Clinic visit



 **TRAVEL**
CLINIC



Our goal is a
healthy, safe,
productive
and fun trip!